

Advanced Environmental Instrumentation

Harnessing the Power of Mobile Computing



✓ Surveyed

✓ Documented

✓ Reported



Realtime

File	Log	Probe	View
Hydrogen Chloride			0.2 ppm
Chlorine			0.64 ppm
Oxygen			20.8 %
Sulfur Dioxide			0.1 ppm
Hydrogen			0 ppm
Temperature			24.4 °C

Example Screens

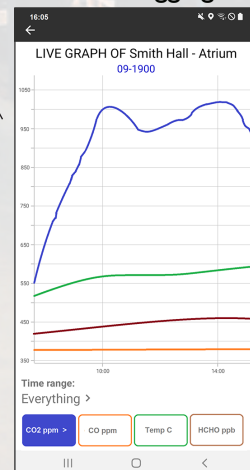
Click the SNAP icon to record measurements, time, date and detailed location name

Log at intervals of your choice. Display real-time trend graphs on handheld and/or remote devices.

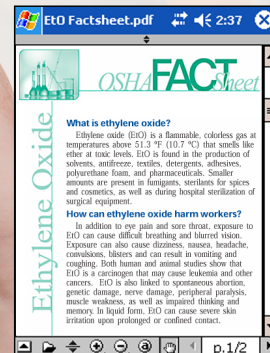
Snap-Shot Log

File	Log	Probe	View
Ozone			0.54 mg/m3
Ammonia			1.3 mg/m3
Sulfur Dioxide			1.3 mg/m3
Nitric Oxide			2.0 mg/m3
Hydrogen Sulfide			0.15 mg/m3
Temperature			22.9 °C
Barometric			754.2 mmHg

Trend Logging



On-Board Docs



DIRECTSENSE® TOX

Toxic Gas Test Meters



GRAYWOLF®
SENSING SOLUTIONS
PH. 1-203-402-0477

EMAIL:
SALESTEAM@
GRAYWOLFSENSING.COM

WEBSITE:
GRAYWOLFSENSING.COM

GrayWolf is transforming how to Measure, Data-log and Document worker exposure levels and indoor air quality parameters.

The DirectSense TOX probes, connecting to your choice of platforms, are powerful environmental data collection tools; intuitive and Easy-To-Use.

- Choose from SO₂, NO₂, NO, CO, H₂S, HCN, EtO, Cl₂, O₂, O₃, NH₃, HCl, H₂, SiH₄, AsH₃, PH₃, PID (TVOCs) ...and more
- Remotely access readings, log to the cloud via secure Microsoft Azure servers with optional GrayWolfLive™
- Up to 6 gas sensors (plus TRH) per probe
- Password protect access or other high-security options available
- Connect multiple probes simultaneously
- Stores measured data along with calibration history, associated photos, videos, text notes, audio notes ...and more
- “Snap-Shot” instantaneous data capture and long-term data trending
- On-board measurement tips, industry guidelines and help files
- OEM option for alternative data connection

Choose Your Platform:

AdvancedSense®
Purpose-built GrayWolf Meters



GrayWolf Supplied Windows Tablets



Apple iOS and Android Devices
(use your own or GrayWolf supplied)



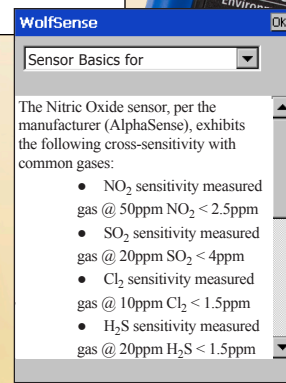
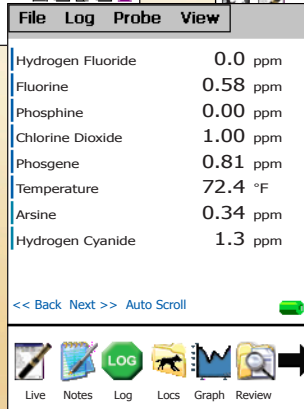
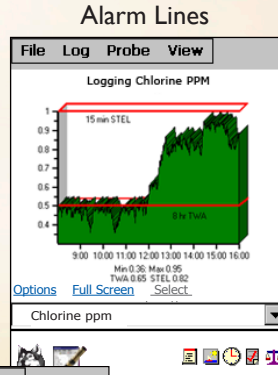
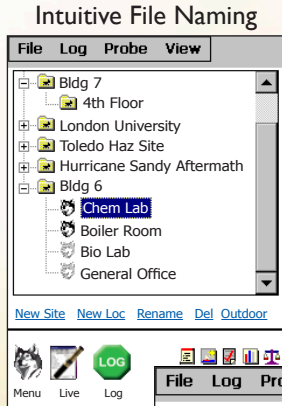
GrayWolfLive™ Cloud App



Or use your device as the instrument platform **Remote Data Access** to, and email/text alerts from, any WiFi enabled platforms via optional **GrayWolfLive**

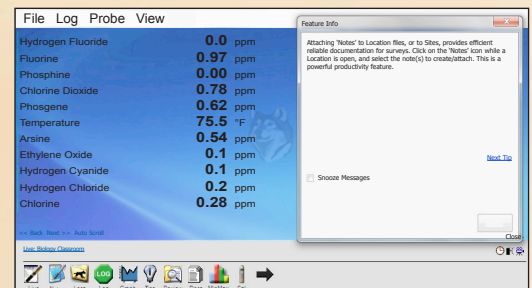
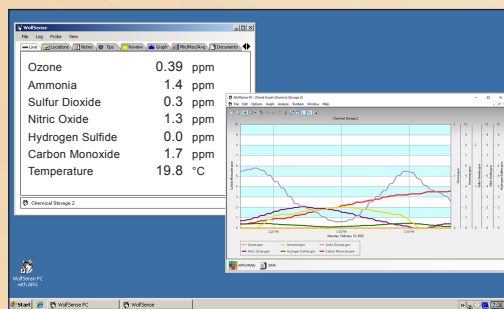
Advanced Toxic Gas Measurement

Example Screens



Documenting and data-logging gas parameters has never been easier. Provide a descriptive name for files using the virtual keyboard. Record your readings as snap-shot data captures, or as trend logs over time. On-board educational info. Efficiently attach notes, in-situ (or after-the-fact) direct to data files:

- Photos
- Videos
- Infrared Images
- Audio
- Text
- Events (time-tagged text)



GrayWolf manufactured meters, WIN tablets, and Android devices that are ideal for the application are available from GrayWolf; or connect probes to your own device.

GrayWolf's TOX kits come with WolfSense® PC software for data transfer, analysis, graph/report generation and/or simple export to Excel.



Toxic exposure and/or IAQ applications with the appropriate sensors.

DSII-8

- Easy to calibrate all parameters
- Calibration history stored on smart sensor
- Select up to 6 gas sensors in one probe (plus %RH and °F/°C)
- Plus %RH Temperature



Display units as:

- ppb
- $\mu\text{g}/\text{m}^3$
- ppm
- mg/m^3

(mass concentration readings are auto-compensated w/optional barometric pressure sensor)

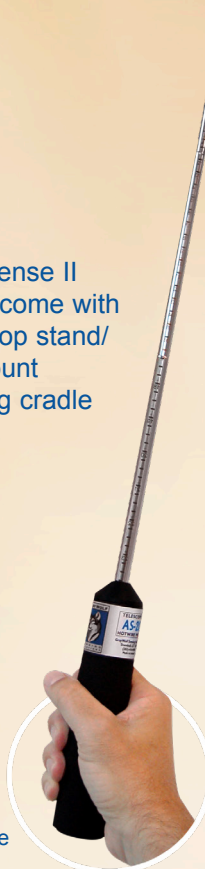
VOCs (PID) plus 5 specific gases, %RH, and temperature



DirectSense II probes come with bench-top stand/wall-mount charging cradle

AS-201/202A

Air Velocity Probe (connects via cable to AdvancedSense or WIN tablets)



ZEPHYR-LDP
Differential Pressure Module (option for barometric)

Interface these meters to GrayWolf platforms; and/or use as stand-alones



PC-3016A

6-Channel Particle Meter (optional WolfRadio™ XM to transmit data directly to the cloud, iOS or Android)



PM-601

Particulate Concentration

DIRECTSENSE[®] TOX



✓ MEASURE SMART

✓ REPORT EFFICIENTLY

Toxic Gas Test Meters

SPECIFICATIONS: DirectSense II

GAS	Range/Resolution (ppm)	Limit of Detection (ppm)
Ammonia (NH ₃) Standard range sensor	0.0 to 100.0	<1.0
Ammonia (NH ₃) High range sensor	0 to 1000	<5
Carbon Monoxide (CO) Standard range sensor	0.0 to 500	0.1
Carbon Monoxide (CO) High range sensor	0.0 to 5000	1
Chlorine (Cl ₂)	0.00 to 20.00	<0.02
Hydrogen (H ₂)	0 to 1000	<2
Hydrogen Chloride (HCl)	0.0 to 20.0	<0.2
Hydrogen Cyanide (HCN)	0.0 to 100.0	<0.05
Hydrogen Sulfide (H ₂ S)	0.00 to 50.00	<0.03
Formaldehyde (HCHO) <small>(Inquire about higher range standard range:</small>	0.00 to 1.00	<0.02
Nitric Oxide (NO)	0.0 to 250.0	<0.2
Nitrogen Dioxide (NO ₂)	0.00 to 20.00	<0.02
Oxygen (O ₂)	0.0 to 25.0%	0.2%
Ozone (O ₃)	0.00 to 1.00	<0.02
Sulfur Dioxide (SO ₂)	0.0 to 50.0	<0.1
Arsine (AsH ₃)	0.00 to 1.00	<0.03
Chlorine Dioxide (ClO ₂)	0.00 to 1.00	<0.03
Diborane (B ₂ H ₆)	0.00 to 1.00	<0.03
Ethylene Oxide (C ₂ H ₄ O)	0.0 to 100.0	<0.1
Fluorine (F ₂)	0.00 to 1.00	<0.02
Hydrogen Fluoride (HF)	0.00 to 10.00	<2
Phosgene (COCl ₂)	0.00 to 1.00	<0.02
Phosphine (PH ₃)	0.0 to 10.0	<0.1
Silane (SiH ₄)	0.00 to 50.00	<0.1
Carbon Dioxide (NDIR CO ₂)	0 to 6,000 10,000 or 20,000	1
TVOC (PID)	4 ranges from low ppb to 10,000ppm, suitable for varied IAQ, mfg, and toxic gas exposure applications. Contact GrayWolf for specifications.	
Temperature: (PT100)	Accuracy: ±0.3°C Range: -10.0° to 160.0°F (-25.0° to +70.0°C)	
Relative Humidity (capacitive)	Accuracy +/- 2%RH 0 to 80%RH, +/-3%RH >80 to 100%RH	
Operating Range:	0 to 98%RH (non-condensing), -20° to 50°C	
	Specific gas sensors may have a reduced operating range	
Probe Dimensions (DSII):	3.3" (83mm) W x 2.2" (55mm) H x 11.6" (295mm) L	
Weight (probe):	without sensors 1lb (0.46kg)	
Power (probe):	6600mAh Li-Ion rechargeable Typical battery life 9 hours to 36+ hours dependent on sensor mix	
	Meter/Tablet/Smartphone battery life varies by make and model	
	Typical sensor life, sensor drift and response times vary by sensor	

SPECIFICATIONS ARE SUBJECT TO CHANGE WITHOUT FURTHER NOTICE

- Automated reporting software, and many other accessories are available from GrayWolf. View them on our website at graywolvesensing.com/accessories/



GRAYWOLF[®]
SENSING SOLUTIONS
 6 RESEARCH DRIVE (WORLDWIDE HEADQUARTERS)
 SHELTON, CT 06484 USA
 PH. (1) 203-402-0477
 800-218-7997

EMAIL: SALESTEAM@GRAYWOLFSENSING.COM

GRAYWOLFSENSING.COM



◀ **PCC-25**
Dual-Probe
Security Case



PCC22-API ▶
Hardshell Case



CA-HD4-A1 ▶
Calibration Cap



▲ **ACC-BELTCL-2** or **ACC-BELTCL-3** beltclips for convenient walk-thru measurements or personal protection monitoring.



▲ **CA-GSXX**
Gas Calibration Kits. Specific calibration gases are available in various portable cylinder sizes



▲ **PCC-07T**
Nylon carrying case for ACC-TPDI tripod, mounting hardware, and added accessories



▶ **ACC-TPD-1**
Tripod (with optional mounting hardware)

DirectSense TOX kits are available that include the platforms of your choice. These complete kits also come with WolfSense PC desktop data transfer software, hardshell case, required accessories and much more. Contact GrayWolf for details.

GRAYWOLF
SENSING SOLUTIONS
 ANNACOTTY INDUSTRIAL PARK, UNIT 1C
 ANNACOTTY, COUNTY LIMERICK
 IRELAND V94 PR2Y
 PH. (353) 61358044