

Advanced Environmental Instrumentation

Harnessing State-of-the-Art Technology for Air Measurement Applications

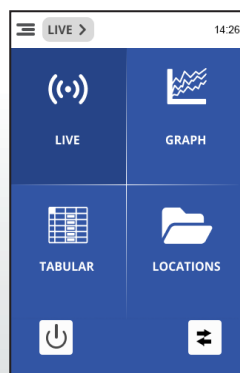


☑ Surveyed

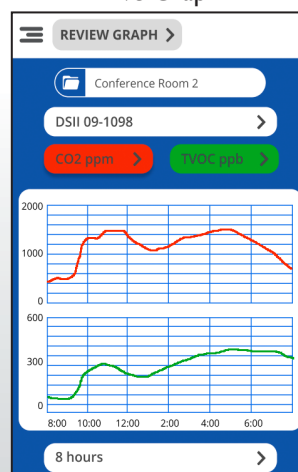
☑ Documented

☑ Reported

Menu Screen



Live Graph



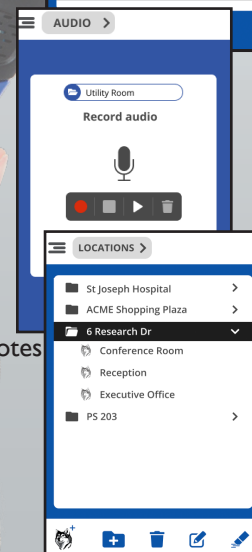
Example Screens

Tabular Display

	TVOC µg/m ³	NH ₃ ppm	SO ₂ ppm
08:45:00	1251.1	2.1	0.89
08:46:00	1257.3	2.1	0.88
08:47:00	1258.0	2.2	0.87
08:48:00	1263.7	2.2	0.86
08:49:00	1266.4	2.2	0.86
08:50:00	1270.6	2.2	0.83
08:51:00	1281.9	2.1	0.84
08:52:00	1287.2	2.1	0.80
08:53:00	1290.5	2.1	0.81



Audio Notes



Descriptive Data File Names

ADVANCEDSENSE[®] XM

Environmental Test Meter Plus



GRAYWOLF[®]
SENSING SOLUTIONS
PH. 1-203-402-0477

EMAIL:
SALESTEAM@
GRAYWOLFSENSING.COM

WEBSITE:
WWW.GRAYWOLFSENSING.COM

The AdvancedSense XM is the next generation of GrayWolf's purpose-built environmental meters. They now run advanced, WolfOS™ application software w/o the overhead of operating systems such as Android or Windows. The same popular, rugged form factor, but with all-new, cutting-edge electronics. For 25 years, GrayWolf has transformed the way that environmental measurements are taken. Display, data-log and annotate (on-site) a broad range of parameters with an accurate, highly-reliable instrument.

- Simultaneously connect 1 or more GrayWolf DirectSense® II probes with up to 8 sensors per probe plus a 6-channel, high-end particulate meter (PM1, PM2.5, PM10, TPM and more)
- Available sensors: TVOCs, CO₂, CO, O₃, NH₃, HCHO, H₂S, NO, NO₂, SO₂, Cl₂, O₂, EtO, HCN, H₂, HF, HCl, F₂, AsH₃, SiH₄, %RH, °C/°F, differential pressure, airspeed, dewpoint and other parameters
- Bright, back-lit color touch screen
- Bluetooth wireless and/or cable connection to DirectSense II probes and particle meters
- WiFi for optional GrayWolfLive® remote data access and for emailing data
- **Feature rich** with productivity tools that make your environmental surveys more efficient, more detailed, more reliable:
 - Microphone for audio documentation of surveys
 - Text notes and audio notes auto-attach to data
 - Speaker for audible queues, alarms and more
 - On-board educational info, sensor tips and more
 - Data transfer & reporting software for trend graphs, note management and much more
 - Or simply download data and notes as .CSV files
- Multi-Language
- Highly intuitive and extremely Easy-To-Use



ADVANCEDSENSE[®] XM

Environmental Test Meter Plus

SPECIFICATIONS:

(for additional sensor/probe specifications refer to GrayWolf's DirectSense II, IAQ, TOX, TVOC, AIR, and pitot tube brochures graywolfsensing.com/product-literature/)

General:	
Dimensions:	96mm (3.8in.) w. x 177mm (7.0in.) h. x 47mm (1.8in.) d.
Construction:	Rugged polycarbonate plastic with rubberized side grips. IP64
Weight:	540g (1lb. 3.1oz.) Add 50g (1.7oz.) for auto-zeroing ΔP option
Screen Size:	3.5" HVGA 320 x 480 color touch screen with backlight
Memory:	32GB for data-logging (millions of readings) and notes (event/audio), documents and WolfSafe™ auto-data backup
Wireless Network:	Wi-Fi 802.11 b/g/n with integrated antenna and Bluetooth 4.0 standard (may optionally be ordered with wireless hardware removed)
Audio:	Integral microphone on front for audio recording and 8 ohm speaker on back for alarms, audio queues, and audio note replay (may optionally be ordered with microphone removed)
Mounting:	1/4" - 20 thread (on back) for belt clip, etc. (& for included mini tripod/stand)
Operating Range:	-10°C to 50°C (15°F to 122°F), 0 to 100 %RH non-condensing

Connectors:	
2 x Rugged 8-pin push-pull sockets for GrayWolf DirectSense probes (the AdvancedSense XM will support up to 4 x DirectSense probes with Y-adapters or via Bluetooth)	
1 x Rugged push-pull socket for particulate meters or RH-AS2 direct-connect °C/°F/%RH probe	
2 x sub-mini type K thermocouple temperature sockets. Range -80 to 1100°C (-110 to 2010°F)	
1 x Rugged 8-pin push-pull top socket for hotwire air velocity probes (AS-201/AS-202A)	
1 x USB-C socket. A USB-C to USB-A download cable is supplied as standard.	
1 x 12V, 2.1mm DC power socket	
Optional: 2 x 4mm posts for differential pressure tubing	

Power:	
Battery:	4250 mAh Lithium Ion rechargeable
Battery Life:	24 hours typical for new battery w/ backlight & wireless off (and probes self-powering) The AdvancedSense XM, when cabled, can power DirectSense II probes. Battery life will vary when powering probes, DP pressure sensors and/or wireless.
Recharge time:	4 hours typical. Red/green front LED displays charging/fully charged status.
Power supply:	100/240VAC wall charger (US, EU, UK, AU plugs, and 3m ext cable included)

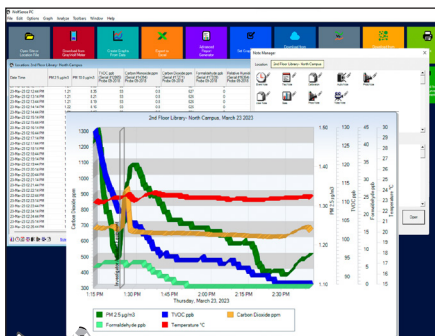
Not all Wolf OS software app features shown may yet be available, but can be downloaded FREE when released. All specifications are subject to change without further notice.

Built-in Sensors:		
	Barometric Pressure	Optional Differential Pressure (DP-702LH)
Range (auto-ranging, dual DP sensors)	600 to 825 mmHg, 800 to 1100 mBar, 23.50 to 32.50 inHg, 0.80 to 1.10 atm	±10,000Pa, ±40 inH ₂ O, ±1000 mmH ₂ O, ±100 mbar, ±70 mmHg
Resolution	0.1 mmHg, 0.1 mBar, 0.01 inHg, 0.01 atm	0.1 Pa, 0.001 inH ₂ O, 0.01 mmH ₂ O, 0.001 mbar, 0.001 mmHg
Accuracy (auto-zeroing enabled)	±0.1% rdg	±1% of rdg ±0.1Pa up to 250Pa, ±1%rdg ±4Pa >250Pa (±1% of rdg ±0.001 inH ₂ O to 1.000 inH ₂ O, ±1%rdg ±0.015 inH ₂ O >1.000 inH ₂ O)

The barometric pressure sensor, supplied as standard, will compensate mass concentration readings (µg/m³) for pressure changes when enabled.

Optional Differential Pressure has exceptional low (and high) range accuracy and auto-zeros (every 2 minutes by default but zeroing frequency is user adjustable to 5 minutes or OFF)

WolfSense[®] PC → data transfer and analysis software supplied as standard



✔ Measure Reliably

✔ Report Efficiently



PCC-AS01 pouch with neck-strap for hands-free surveys. Also hand-strap/belt-loop.



▲ **PCC-20A** Hardshell security case holds AdvS XM, probes (DSII inside or extended for secure monitoring) & accessories. Smaller & larger cases also available.

Cloud Platform and Advanced Reporting Software, Calibration kits, and other accessories are available from GrayWolf. View them online at graywolfsensing.com/accessories/