



Advanced Environmental Instrumentation



✓ Surveyed

✓ Documented

✓ Reported

PC-3500

Handheld Particle Meters

Features and Benefits:

- Measures 0.3 μm to 25.0 μm
- 0.1 CFM (2.83 LPM) flow rate
- Long life laser diode technology
- Measures up to 6 channels of simultaneous data
- Approximates mass concentration in $\mu\text{g}/\text{m}^3$ with density and refractive index corrections, including **PM2.5**, **PM10** and **TSP**
- Integrated handle for one-handed operation
- Large easy-to-use icon driven color touch screen display
- Optional, direct-connect %RH, C°/F° probe available
- Stores up to 45,000 sample records, 1,000 sample locations and 50 recipes internally, broader options when connected to AdvancedSense®/Tablet
- Annotation function allows user to save 32 character notations to a sample record
- Real-Time Meter for detecting particle contamination sources
- Easy configuration and transferable from instrument to instrument
- Connect using RS-232, Ethernet, USB or (optional) Wireless 802.11 b/g, RS 485
- Displays and externally prints reports for ISO 14644-1, EU GMP Annex I and FS 209E
- Internal audible alarm
- User-definable reports
- User-selectable channel sizes
- Complies with ISO 21501-4 and JIS B9921 standards
- Seamless integration into a facility monitoring system
- Lightweight high-impact injection molded plastic enclosure
- 2 year warranty on instrument, except filters, 1 year on other accessories



Use the PC-3500 as a stand-alone particle meter, plug it into a sophisticated AdvancedSense®/WolfPack® system or into a mobile computer for simultaneous connection with GrayWolf's DirectSense® probes.

- The PC-3500 Handheld Particle Counter measures 0.3 μm to 25.0 μm with a flow rate of 0.1 CFM (2.83 LPM).
- Easy to configure, this instrument displays up to 6 user-selectable size channels as well as temperature and relative humidity.
- The PC-3500 mass concentration mode approximates density in $\mu\text{g}/\text{m}^3$ and allows for density and refractive index corrections to ensure accuracy.
- The PC-3500 counters can be controlled and monitored remotely via web browser.
- Export data to (included) GrayWolf WolfSense® PC data-download software or view data and generate ISO 14644-1, EU GMP Annex 1 or FS 209E reports on screen or in real time through the versatile PC-3500 output options.
- The PC-3500 meets ISO 21501-4 and JIS B9921, ensuring compliance with an on-board pulse height analyzer.



GRAYWOLF®
SENSING SOLUTIONS
Ph. 1-203-402-0477

Email:
Salesteam@GrayWolfSensing.com

Website:
www.GrayWolfSensing.com



PC-3500

Handheld Particle Meters

Size Range	0.3 to 25µm
Size Channels	Factory calibrated at 0.3, 0.5, 1.0, 2.5, 5.0, 10.0 µm variable binning
Flow rate	0.1 CFM (2.83 LPM)
Concentration Limit	10,000,000 Particles/ft ³ @ 10% coincidence loss
Battery Run Time	10 hours
Light Source	Long life laser diode
Counting Efficiency	50% @ 0.3 µm; 100% for particles >0.45 µm per JIS
Zero Count	<1 count / 5 minutes (<2 particles/ft ³) (per ISO 21501-4 & JIS)
Count Modes	Automatic, manual, real-time meter, cumulative/differential, mass concentration, count or concentration
Count Alarms	1 to 9,999,999 counts
Calibration	NIST traceable
Display	4.3" (10.9 cm) WQVGA (480x272) color touch screen
Printer (Optional)	External thermal printer
Vacuum Source	Internal pump with automatic flow control
Filtered Exhaust	Internal HEPA filter
Number of Channels	6
Custom Size Channels	Calibration for custom size channels available
Audible Alarm	Adjustable built-in alarm
Battery	Removable Li-ion
Battery Recharge Time	4 hours within instrument (<2 hours with external battery charger)
Reports	ISO 14644-1, EU GMP Annex 1, FS 209E
Recipes	50 user-configurable recipes
Communication Modes	RS232, Ethernet and USB
Optional Comms Mode	Wireless 802.11 b/g, RS485
Environmental Sensor	Optional temperature and relative humidity probe 32° to 122°F (0° to 50°C) ±1°F (0.5°C), 15-90% ±2% relative humidity
Alarm	Alarms on counts for all particle sizes, low battery, sensor failure, environmental sensors and flow
Standards	ISO 21501-4 and JIS B9921
Calibration	Recommended minimum once per year
External Surface	High impact injection molded plastic
Dimensions (L x W x H)	10" x 5" x 4.5" (25.4 cm x 12.9 cm x 11.4 cm) includes handle and does not include probes
Weight	2.2 lb (1.0 kg)
Included Accessories	PCC-GW3500 hard-shell carrying case, quick start guide, operating manual on USB flash drive, isokinetic probe, purge filter, battery, belt clip, WolfSense PC data download software, USB cable, power supply & cable
Optional Accessories	PCC-35P security case, printed manual, TRH probe, spare battery, external battery charger, external printer and isokinetic probes
Buffer Memory	45,000 sample records (rotating buffer) including particle count data, environmental data, locations and times. Scrollable on screen or printout
Sample Locations	Up to 1,000 locations 20 characters long and 50 user defined recipes
Sample Time	1 second to 99 hours
Power	110 to 240 VAC 50/60 Hz universal in-line power supply
Operating Conditions	41° to 104°F (5° to 40°C) / 20% to 95% non-condensing
Storage Conditions	32° to 122°F (0° to 50°C) / Up to 98% non-condensing
Warranty	2 years on instrument, 1 year on accessories, no warranty on filters

GrayWolf Sensing Solutions reserves the right to change specifications without notice.



GRAYWOLF SENSING SOLUTIONS
 6 Research Drive (Worldwide Headquarters)
 Shelton, CT 06484 USA
 Ph. (1)203-402-0477
 800-218-7997



Email: Salesteam@GrayWolfSensing.com
www.GrayWolfSensing.com

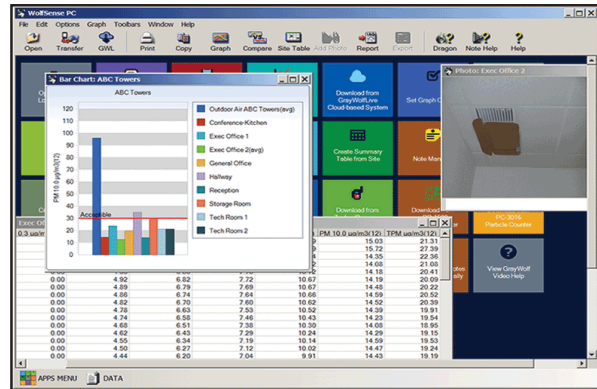
Measure Smart

Report Efficiently



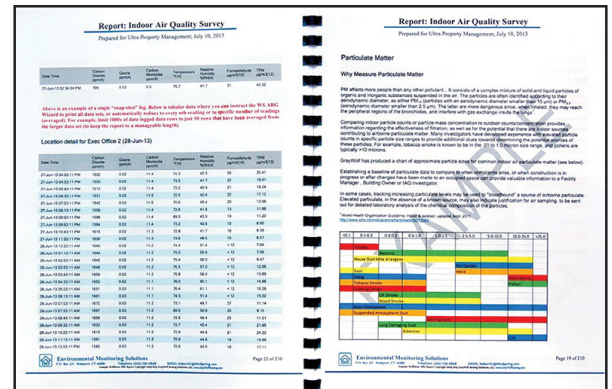
Example ▲
AdvancedSense Screen
 (interface enables GrayWolf's powerful in-situ features for particulate data; audio, photo, text notes and much more).

Optional PCC-35P Hard-shell Security case with cutouts for AdvancedSense meter, sensor exposure for DSII probe plus space & inlet exposure for internal PC-3500 ▼



Example WolfSense PC Screen data transfer & analysis software (supplied as standard)

Example WolfSense ARG report (optional automated report generation software)



GRAYWOLF SENSING SOLUTIONS
 Annacotty Industrial Park, Unit 1C
 Annacotty, County Limerick
 V94 PR2Y Ireland
 Ph. (353) 61358044