

Advanced Environmental Instrumentation

Harnessing the Power of Mobile Computing

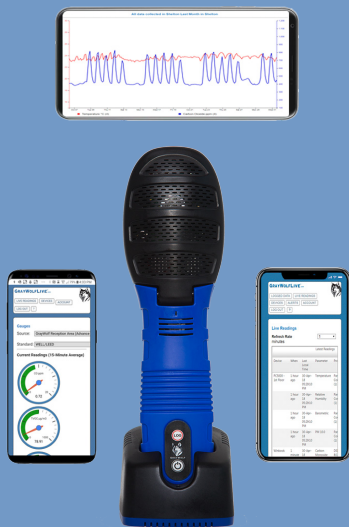


✓ Surveyed

✓ Documented

✓ Reported

Cloud-based logging, remote access and control of any of GrayWolf's Wi-Fi enabled probes, meters or monitors



Measurements are logged to the cloud on secure Azure servers, at one minute intervals. Review data on smartphones, or any web enabled device. Attached notes (audio, text, photos, videos, etc.) may also be reviewed. Data may be displayed as single or multi-Y graphs, gauges, live readings and/or tables. Download logged readings via Wi-Fi to GrayWolf's free Windows based WolfSense® PC data transfer and reporting software, or export as a .CSV file to any device. Maintain your fleet of DirectSense® II probes and other GrayWolf equipment by organizing devices into groups, creating custom dashboards and viewing device status of all your equipment on a single screen.

Applications for GrayWolfLive include:

- **Indoor Air Quality (IAQ)**

Access instrument data from afar; whether viewing GrayWolf IAQ monitors/kits left for hours, days, weeks or permanently measuring key IAQ parameters, or even units that your test engineers are utilizing for walk-thru, spot check surveys. Logged readings and attached operator notes (audio, text, etc.) are all easy to get to.

- **Industrial Hygiene (IH)**

The enhanced, **GWLive-ALERTS** version of GrayWolfLive enables text messaging to your smart phone and email to any internet accessible devices when toxic gas levels or other measured parameters exceed your defined levels. The alert message may be e-mailed or text messaged to multiple e-mail addresses or phone numbers.

- **Heating Ventilation Air Conditioning (HVAC) & Facility Management (FM)**

Monitor differential pressure (ΔP) over time and receive alerts when negative pressure conditions occur, or when set points for air velocity/%RH/°C/°F/CO/NO₂/NO/SO₂/CO₂/particulate (or other parameters on

GrayWolf instruments are exceeded in distant buildings or on another floor at your own location.

- **Green Buildings**

Remotely monitor relevant parameters for ongoing maintenance of LEED, WELL or other green guidelines/standards. Also, monitor GrayWolf systems deployed in buildings for pre-occupancy credits toward LEED/WELL and other certifications to determine when concentrations of TVOC, HCHO, CO, PM2.5, PM10, O₃ or other parameters fall within target values. Reports can be generated and any additional air sampling that is determined necessary may be initiated.

- **Ambient Air**

Leave GrayWolf meters outside for short-term tests and check them remotely when monitoring downwind of potential pollutant sources, process release plumes, or other pollutant events. Also, access outdoor measurements in real-time to compare against indoor measured levels... and **many other applications.**

GRAYWOLFLIVE®

Remote Access to GrayWolf Data Collection Meters



GRAYWOLF®
SENSING SOLUTIONS
PH. 1-203-402-0477

EMAIL:
SALESTEAM@
GRAYWOLFSENSING.COM

WEBSITE:
WWW.GRAYWOLFSENSING.COM

GRAYWOLF[®]LIVE

Remote Access to GrayWolf Probes, Meters, Monitors

Specifications

Device Requirements:

Any web-enabled device may access GrayWolfLive through a standard browser (e.g., Chrome, Firefox, Safari).

Download Software:

Use WolfSense PC to import data from GrayWolfLive (and utilize the optional WolfSense ARG for automated reporting). CSV files may also be exported to any device in lieu of using WolfSense PC.

Cloud Storage Memory:

Note that measurement data is synced to the Cloud for remote access, data sharing and with reliable accessibility and security. Simultaneously, data can be logged on the field GrayWolf meter/platform for additional security and/or alternative log intervals. Meter memory will vary. Cloud storage: 1 year of live data, 1GB of data for photo notes/video and ample storage for data-points transferred from meters. Logged data can be exported or downloaded from the Cloud at any time for permanent storage on your local PC or other device.

Bandwidth:

2-4 KB/min (plus extra for Notes, Audio and Photos)

Internet Access:

Each individual device communicating via Wi-Fi requires a unique GrayWolfLive license. For example, an AdvancedSense[®] XM meter interfaced to 2 x DirectSense[®] II probes and to a particle meter (as a system) requires a single license, while 2 x DirectSense[®] II probes plus a Wi-Fi enabled Particle Meter, all communicating independently, would require 3 x GWLive licenses. An unlimited number of authorized users may access your (password protected) files simultaneously.

Email/Text Alerts (GWLive-ALERTS version only):

Send to 10 e-mail addresses and/or 5 phone numbers maximum (in some countries, the number of texts per month is restricted; contact GrayWolf for details).

SPECIFICATIONS ARE SUBJECT TO CHANGE WITHOUT FURTHER NOTICE



GRAYWOLF[®] SENSING SOLUTIONS

6 RESEARCH DRIVE (WORLDWIDE HEADQUARTERS)
SHELTON, CT 06484 USA
PH. (1) 203-402-0477
800-218-7997

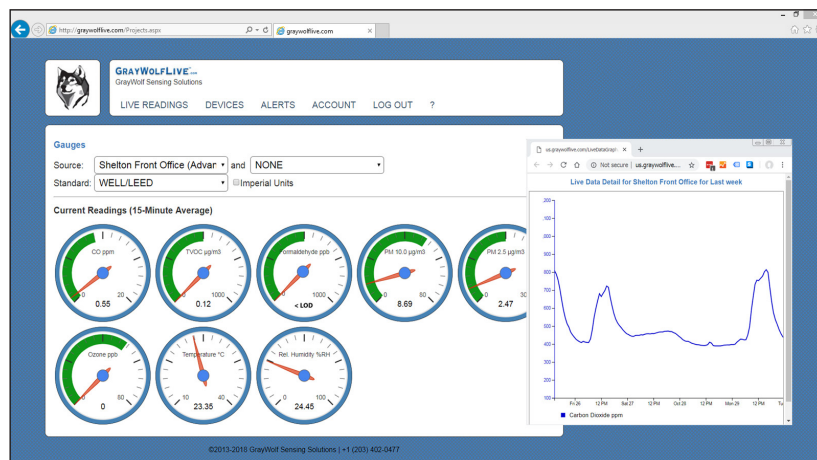
EMAIL: SALESTEAM@GRAYWOLFSENSING.COM

WWW.GRAYWOLFSENSING.COM



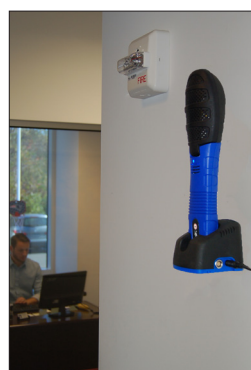
✓ Measure Smart

✓ Report Efficiently



▲ Example GWLive dashboard (shown here with WELL/LEED Application Specific Gauges)

The GrayWolfLive dashboard reformats to fit the internet accessible device that you log in with (via your password protected account). Review info from GrayWolf probes and/or instruments at one or multiple locations. Select **LIVE READINGS** to access the data that logs at 1 minute intervals to the Cloud. View all tabular readings or Summary Data (e.g., last 8 hours, last 24 hours, last year). Display single Y graphs, or select "Multi-Y Graphs" or select "View Gauges" where "General", "WELL/LEED" or user defined Gauges can be set up to display. **DEVICES** allows you to perform various functions on remote GrayWolf instruments, and to access data/notes logged onto the devices. Export lets you send data to GrayWolf's WolfSense PC software for cut and paste reporting or optional WolfSense ARG for auto-report generation. Alternatively, export the data as a .CSV file to any device. **ALERTS** (if this option has been purchased), allows high/low set-points to be assigned for text/email notification when exceeded.



▲ Remotely access desk or wall-mounted units set up for continuous monitoring.

Access the full range of GrayWolf parameters via Wi-Fi enabled AdvancedSense[®] devices w/Android, iOS, WS-LAP apps, or Particulate meters. ▼



▲ Remotely access technicians' portable test meter data.

GRAYWOLF[®] SENSING SOLUTIONS

ANNACOTTY INDUSTRIAL PARK, UNIT 1C
ANNACOTTY, COUNTY LIMERICK
IRELAND V94 PR2Y
PH. (353) 61358044