



Pony Testing International Group



扫二维码  
关注谱尼测试

报告编号(Report ID): BMFWU9PB26369721

# UN38.3 测试报告

## UN38.3 Test Report

Sample Description&Model

Li-polymer Battery

PL802795x3

(3.7V, 6.6Ah, 24.42Wh)

Applicant

GrayWolf Sensing Solutions

Manufacturer

Hangzhou Skyrich Power Co.,Ltd



微信扫一扫，使用小程序



小程序扫一扫，在线验证

PONY 谱尼测试  
Pony Testing International Group

No.: BMFWU9PB26369721

Code: s0zk37kqu

[www.ponytest.com](http://www.ponytest.com)

**PONY 谱尼测试**  
Pony Testing International Group  
Hotline 400-819-5688  
[www.ponytest.com](http://www.ponytest.com)

BeijingLab: (010)82618116

ShanghaiLab: (021)64851993

QingdaoLab: (0532)88703866

ShenzhenLab: (0755)26050009

TianjinLab: (022)27360730

SuzhouLab: (0512)62997900

ChengdeLab: (0431)85150908

DalianLab: (0411)87335918

HarbinLab: (0451)88104561

ZhengzhouLab: (0371)69350670

XinjiangLab: (0991)6684186

ShijiazhuangLab: (0311)85376660

XianLab: (029)89608785

HuhehaoteLab: (0471)3450025

HangzhouLab: (0571)87219096

NingboLab: (0574)87736499

WuhanLab: (027)83997127

HefeiLab: (0551)63843474

GuangzhouLab: (020)89224310

XianmenLab: (0592)5568048

ChengduLab: (028)87702708



## I、 SAMPLE DESCRIPTION

Sample Description	Li-polymer Battery		Sample Model	PL802795x3	
Applicant	GrayWolf Sensing Solutions				
Manufacturer	Hangzhou Skyrich Power Co.,Ltd				
Nominal Voltage	3.7V	Rated Capacity	6.6Ah	Limited Charge Voltage	4.2V
Charge Current	1.32A	Maximum Continuous Charge Current	2.0A	End Charge Current	0.33A
Cut-off Voltage	2.75V	Maximum Discharge Current	2A	Use	---
Cell Number In Each Battery	3	Cell Model	PL802795	Cell Capacity	2.2Ah
Electrochemistry System	Li-Co				
Manufacturer of cell	Hangzhou Skyrich Power Co.,Ltd				
Entrust date	2018-04-23		Finished date	2018-05-22	

## II、 TEST METHOD

UNITED NATIONS "Recommendations on the TRANSPORT OF DANGEROUS GOODS" Manual of Tests and Criteria (ST/SG/AC.10/11/Rev.6), Part III sub-section.

## III、 TEST ITEM

- |                        |                           |
|------------------------|---------------------------|
| 1. Altitude simulation | 5. External short circuit |
| 2. Thermal test        | 6. Crush                  |
| 3. Vibration           | 7. Overcharge             |
| 4. Shock               | 8. Forced discharge       |

## IV、 CONCLUSION

ITEM	SAMPLE NUMBER	STANDARD	CONCLUSION
Altitude simulation	N1~N4 C1~C4	UN38.3 ST/SG/AC.10/11/Rev.6	PASS
Thermal test			PASS
Vibration			PASS
Shock			PASS
External short circuit			PASS
Crush	N5~N9		PASS
Overcharge	N10~N13 C5~C8		PASS
Forced discharge	N14~N23 C9~C18		PASS

The Samples has passed the test items of UNITED NATIONS "Recommendations on the TRANSPORT OF DANGEROUS GOODS" Manual of Tests and Criteria (ST/SG/AC.10/11/Rev.6), Part III sub-section.

Appraiser: *Liu Jidong*  
Issue Date: 2018.05.28

Checker: *Huang Zheng*

Approver: *Song Hong*





扫二维码  
关注谱尼测试

Notes:

N1~N4, N10~N13: Small batteries at first cycle, in fully charged states;

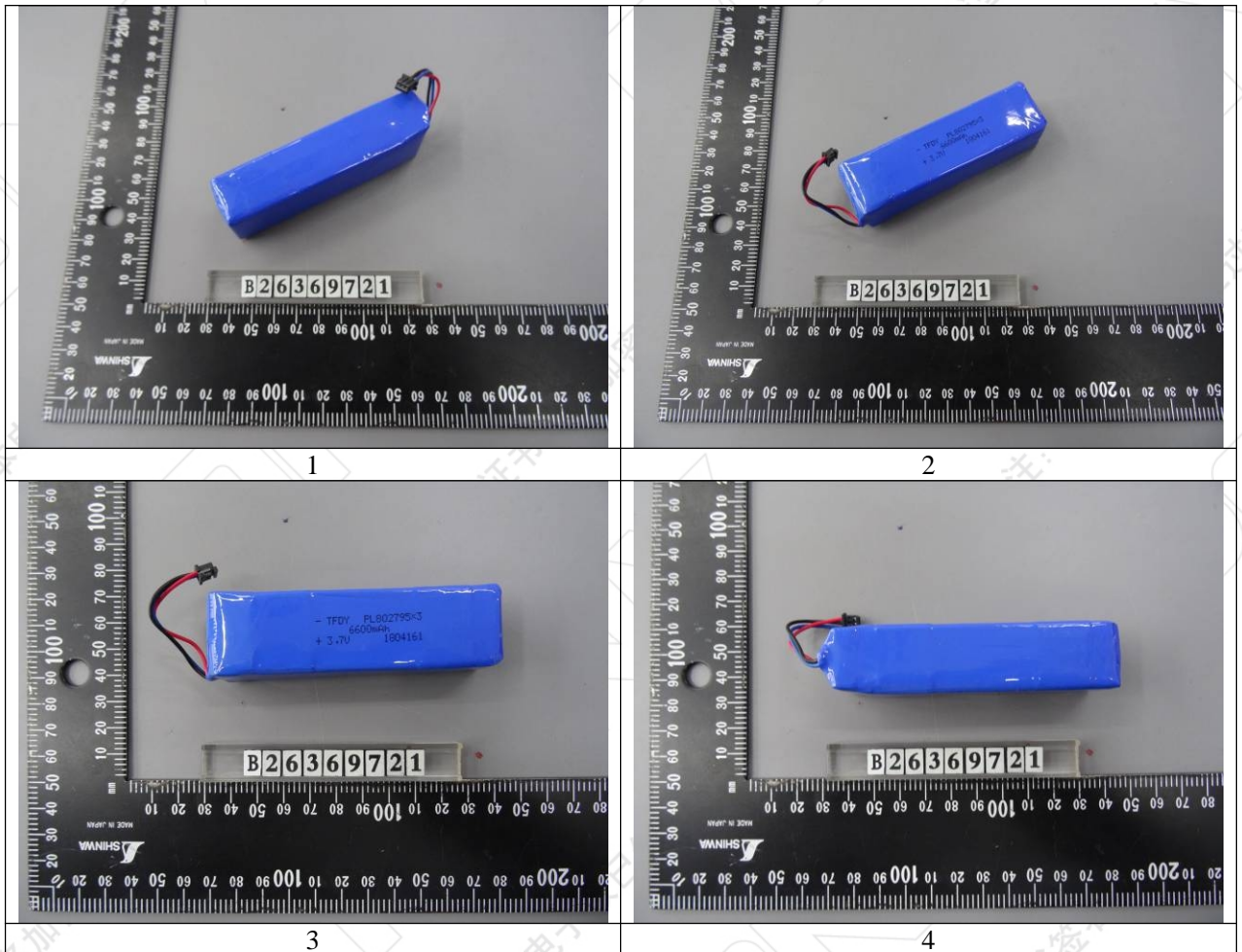
N5~N9: Rechargeable component cells at first cycle at 50% of the design rated capacity;

N14~N23: Rechargeable component cells, at first cycle in fully discharged states;

C1~C4, C5~C8: Small batteries, after 50 cycles ending in fully charged states;

C9~C18: Rechargeable component cells after 50 cycles ending in fully discharged states.

V、 PHOTO OF THE SAMPLE



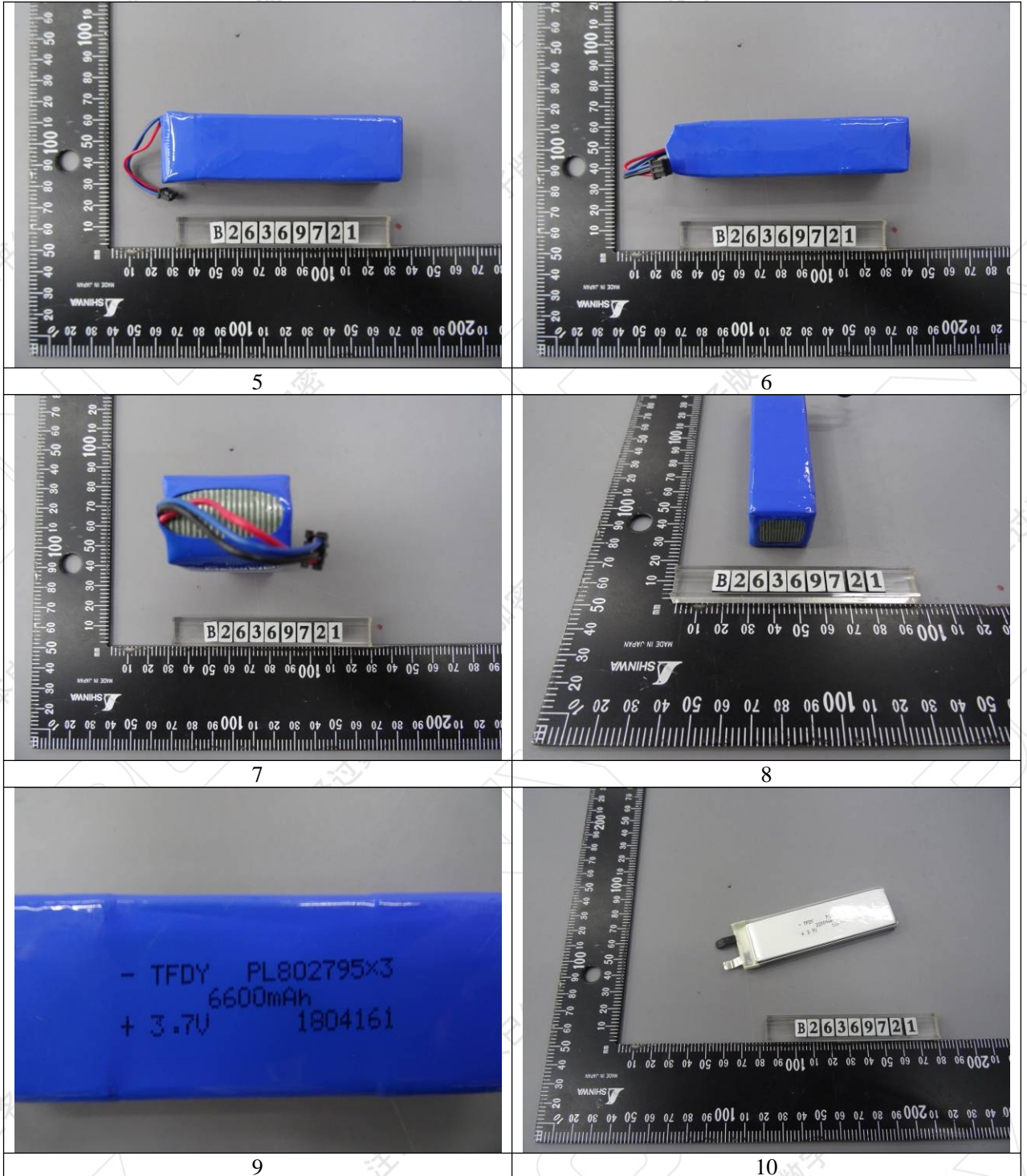
Authenticate the photo on original report only





扫描二维码  
关注谱尼测试

V、PHOTO OF THE SAMPLE(CONTINUE)

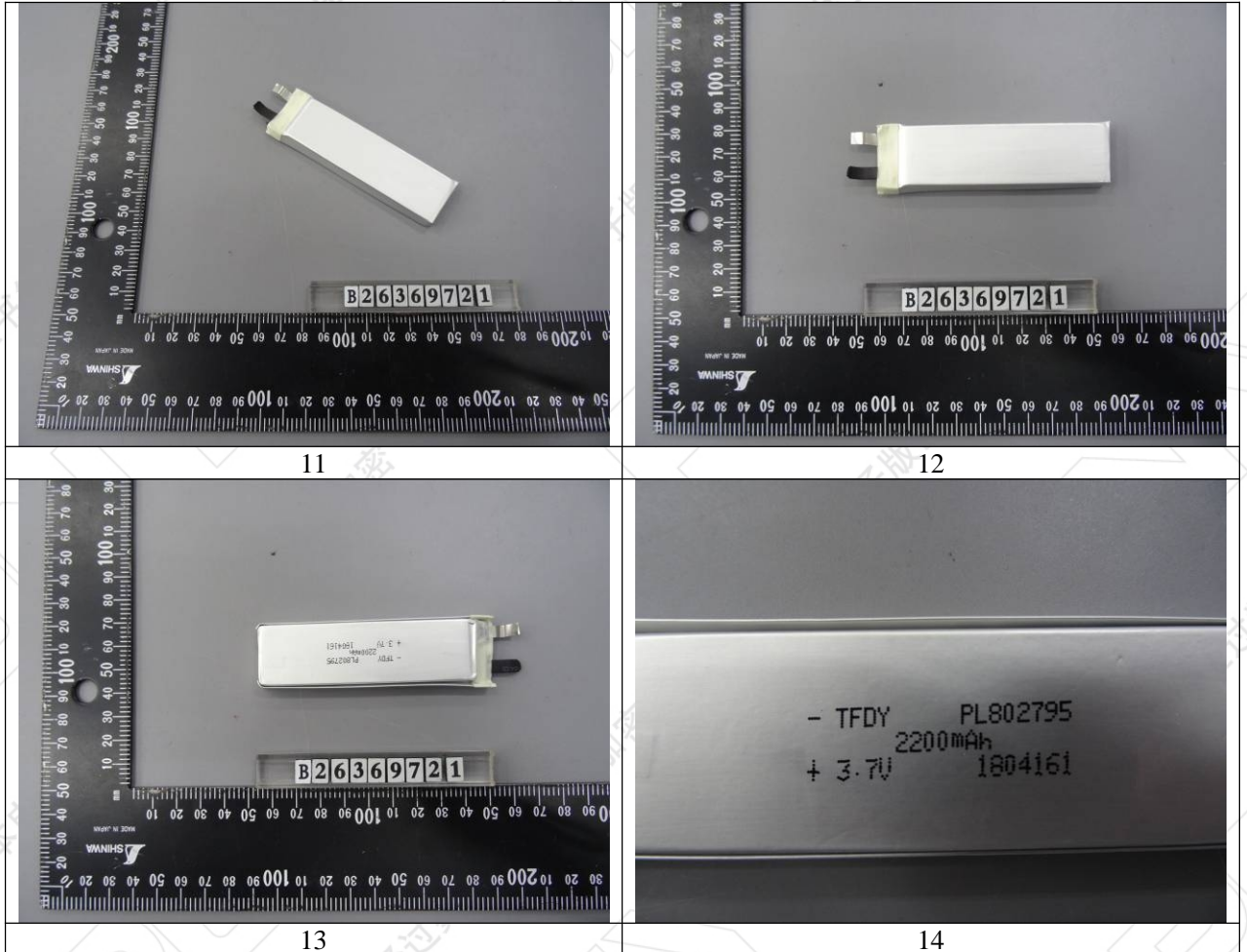


Authenticate the photo on original report only



扫二维码  
关注谱尼测试

V、PHOTO OF THE SAMPLE(CONTINUE)



Authenticate the photo on original report only

VI、STANDARD REQUIREMENT

Tests T.1 to T.5 shall be conducted in sequence on the same cell or battery. Tests T.6 and T.8 shall be conducted using not otherwise tested cells or batteries. Test T.7 may be conducted using undamaged batteries previously used in tests T.1 to T.5 for purposes of testing on cycled batteries.

In order to quantify the mass loss, the following procedure is provided:

$$\text{Mass loss}(\%) = (M_1 - M_2) / M_1 \times 100$$

Where  $M_1$  is the mass before the test and  $M_2$  is the mass after the test. When mass loss does not exceed the values in Table blow, it shall be considered as “no mass loss”.





Mass M of cell or battery	Mass loss limit
$M < 1g$	0.5%
$1g \leq M \leq 75g$	0.2%
$M > 75g$	0.1%

### T.1 Altitude simulation

Test cells and batteries shall be stored at a pressure of 11.6 kPa or less for at least six hours at ambient temperature ( $20 \pm 5$  °C).

Cells and batteries meet this requirement if there is no leakage, no venting, no disassembly, no rupture and no fire and if the open circuit voltage of each test cell or battery after testing is not less than 90% of its voltage immediately prior to this procedure. The requirement relating to voltage is not applicable to test cells and batteries at fully discharged states.

### T.2 Thermal test

Test cells and batteries are to be stored for at least six hours at a test temperature equal to  $72 \pm 2$  °C, followed by storage for at least six hours at a test temperature equal to  $-40 \pm 2$  °C. The maximum time interval between test temperature extremes is 30 minutes. This procedure is to be repeated until 10 total cycles are complete, after which all test cells and batteries are to be stored for 24 hours at ambient temperature ( $20 \pm 5$  °C). For large cells and batteries the duration of exposure to the test temperature extremes should be at least 12 hours.

Cells and batteries meet this requirement if there is no leakage, no venting, no disassembly, no rupture and no fire and if the open circuit voltage of each test cell or battery after testing is not less than 90% of its voltage immediately prior to this procedure. The requirement relating to voltage is not applicable to test cells and batteries at fully discharged states.

### T.3 Vibration

Cells and batteries are firmly secured to the platform of the vibration machine without distorting the cells in such a manner as to faithfully transmit the vibration. The vibration shall be a sinusoidal waveform with a logarithmic sweep between 7 Hz and 200 Hz and back to 7 Hz traversed in 15 minutes. This cycle shall be repeated 12 times for a total of 3 hours for each of three mutually perpendicular mounting positions of the cell. One of the directions of vibration must be perpendicular to the terminal face.



The logarithmic frequency sweep shall differ for cells and batteries with a gross mass of not more than 12 kg (cells and small batteries), and for batteries with a gross mass of more than 12 kg (large batteries).

For cells and small batteries: from 7 Hz a peak acceleration of 1  $g_n$  is maintained until 18 Hz is reached. The amplitude is then maintained at 0.8 mm (1.6 mm total excursion) and the frequency increased until a peak acceleration of 8  $g_n$  occurs (approximately 50 Hz).

A peak acceleration of 8  $g_n$  is then maintained until the frequency is increased to 200 Hz.

For large batteries: from 7 Hz to a peak acceleration of 1  $g_n$  is maintained until 18 Hz is reached. The amplitude is then maintained at 0.8 mm (1.6 mm total excursion) and the frequency increased until a peak acceleration of 2  $g_n$  occurs (approximately 25 Hz). A peak acceleration of 2  $g_n$  is then maintained until the frequency is increased to 200 Hz.

Cells and batteries meet this requirement if there is no leakage, no venting, no disassembly, no rupture and no fire during the test and after the test and if the open circuit voltage of each test cell or battery after testing in its perpendicular mounting position is not less than 90% of its voltage immediately prior to this procedure. The requirement relating to voltage is not applicable to test cells and batteries at fully discharged states.

#### T.4 Shock

Test cells and batteries shall be secured to the testing machine by means of a rigid mount which will support all mounting surfaces of each test battery.

Each cell shall be subjected to a half-sine shock of peak acceleration of 150  $g_n$  and pulse duration of 6 milliseconds. Alternatively, large cells may be subjected to a half-sine shock of peak acceleration of 50  $g_n$  and pulse duration of 11 milliseconds.

Each battery shall be subjected to a half-sine shock of peak acceleration depending on the mass of the battery. The pulse duration shall be 6 milliseconds for small batteries and 11 milliseconds for large batteries. The formulas below are provided to calculate the appropriate minimum peak accelerations.



Battery	Minimum peak acceleration	Pulse duration
Small batteries	150 g <sub>n</sub> or result of formula $\text{Acceleration}(g_n) = \sqrt{\left(\frac{100850}{\text{mass}^*}\right)}$ Whichever is smaller	6 ms
Large batteries	50 g <sub>n</sub> or result of formula $\text{Acceleration}(g_n) = \sqrt{\left(\frac{30000}{\text{mass}^*}\right)}$ Whichever is smaller	11 ms

\* Mass is expressed in kilograms.

Each cell or battery shall be subjected to three shocks in the positive direction and to three shocks in the negative direction in each of three mutually perpendicular mounting positions of the cell or battery for a total of 18 shocks.

Cells and batteries meet this requirement if there is no leakage, no venting, no disassembly, no rupture and no fire and if the open circuit voltage of each test cell or battery after testing is not less than 90% of its voltage immediately prior to this procedure. The requirement relating to voltage is not applicable to test cells and batteries at fully discharged states.

#### T.5 External short circuit

The cell or battery to be tested shall be heated for a period of time necessary to reach a homogeneous stabilized temperature of 57±4°C, measured on the external case. This period of time depends on the size and design of the cell or battery and should be assessed and documented. If this assessment is not feasible, the exposure time shall be at least 6 hours for small cells and small batteries, and 12 hours for large cells and large batteries. Then the cell or battery at 57±4°C shall be subjected to one short circuit condition with a total external resistance of less than 0.1 ohm. This short circuit condition is continued for at least one hour after the cell or battery external case temperature has returned to 57±4°C, or in the case of the large batteries, has decreased by half of the maximum temperature increase observed during the test and remains below that value. The short circuit and cooling down phases shall be conducted at least at ambient temperature.





Cells and batteries meet this requirement if their external temperature does not exceed 170 °C and there is no disassembly, no rupture and no fire during the test and within six hours after the test.

#### T.6 Crush

Crush (applicable to prismatic, pouch, coin/button cells and cylindrical cells less than 18 mm in diameter)

A cell or component cell is to be crushed between two flat surfaces. The crushing is to be gradual with a speed of approximately 1.5 cm/s at the first point of contact. The crushing is to be continued until the first of the three options below is reached.

- (a) The applied force reaches 13 kN  $\pm$  0.78 kN;
- (b) The voltage of the cell drops by at least 100 mV; or
- (c) The cell is deformed by 50% or more of its original thickness.

Once the maximum pressure has been obtained, the voltage drops by 100 mV or more, or the cell is deformed by at least 50% of its original thickness, the pressure shall be released.

A prismatic or pouch cell shall be crushed by applying the force to the widest side. A button/coin cell shall be crushed by applying the force on its flat surfaces. For cylindrical cells, the crush force shall be applied perpendicular to the longitudinal axis.

Each test cell or component cell is to be subjected to one crush only. The test sample shall be observed for a further 6 h. The test shall be conducted using test cells or component cells that have not previously been subjected to other tests.

Cells and component cells meet this requirement if their external temperature does not exceed 170 °C and there is no disassembly and no fire during the test and within six hours after this test.



T.7 Overcharge

The charge current shall be twice the manufacturer's recommended maximum continuous charge current. The minimum voltage of the test shall be as follows:

- (a) When the manufacturer's recommended charge voltage is not more than 18V, the minimum voltage of the test shall be the lesser of two times the maximum charge voltage of the battery or 22V.
- (b) When the manufacturer's recommended charge voltage is more than 18V, the minimum voltage of the test shall be 1.2 times the maximum charge voltage.

Tests are to be conducted at ambient temperature; the duration of the test shall be 24 hours.

Rechargeable batteries meet this requirement if there is no disassembly and no fire during the test and within seven days after the test.

T.8 Forced discharge

Each cell shall be forced discharged at ambient temperature by connecting it in series with a 12V D.C. power supply at an initial current equal to the maximum discharge current specified by the manufacturer.

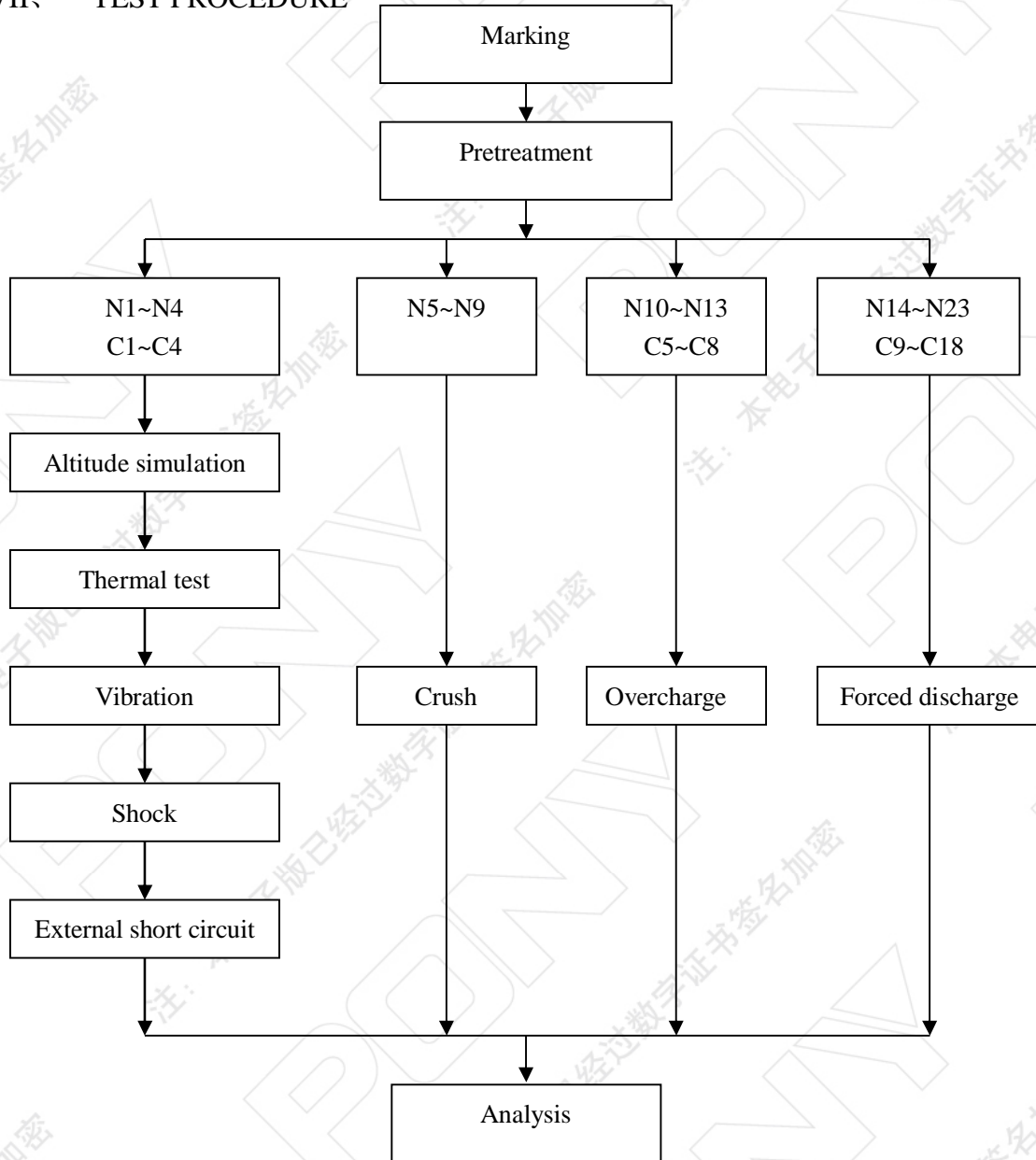
The specified discharge current is to be obtained by connecting a resistive load of the appropriate size and rating in series with the test cell. Each cell shall be forced discharged for a time interval (in hours) equal to its rated capacity divided by the initial test current (in ampere).

Primary or rechargeable cells meet this requirement if there is no disassembly and no fire during the test and within seven days after the test.



扫二维码  
关注谱尼测试

VII、 TEST PROCEDURE







### VIII、 TEST APPARATUS

IE601-01	Simulated altitude low pressure test chamber	IE386-06	A programmable dc power supply
IE383	Stress screening machine	IE600-02	Dc programmable power supply cabinet.
IE338-03	vibrating table	IE502	Universal meter
IE488	Shock tester	IE225-04	Electronic balance
IE604-02	Temperature control battery short circuit testing machine	IE230-04	Digital thermometer
IE604-03	Temperature control battery short circuit testing machine	IE230-06	Digital thermometer
IE604-04	Temperature control battery short circuit testing machine	IE230-08	Digital thermometer
IE505	Battery extrusion needle tester	/	/

### IX、 DATA

#### 1. Altitude simulation

No.	Pre-test		After test		Mass loss (%)	Voltage loss (%)	Whether leakage, venting, disassembly, rupture, fire (Y/N)
	Mass (g)	Voltage (V)	Mass (g)	Voltage (V)			
N1	135.51	4.163	135.51	4.162	0.000	0.024	N
N2	135.49	4.167	135.49	4.167	0.000	0.000	N
N3	136.53	4.162	136.53	4.162	0.000	0.000	N
N4	135.67	4.164	135.67	4.163	0.000	0.024	N
C1	133.57	4.159	133.57	4.159	0.000	0.000	N
C2	133.54	4.160	133.54	4.160	0.000	0.000	N
C3	133.45	4.163	133.45	4.163	0.000	0.000	N
C4	134.46	4.158	134.46	4.158	0.000	0.000	N



扫二维码  
关注谱尼测试



Pony Testing International Group

## 2. Thermal test

No.	Pre-test		After test		Mass loss (%)	Voltage loss (%)	Whether leakage, venting, disassembly, rupture, fire (Y/N)
	Mass (g)	Voltage (V)	Mass (g)	Voltage (V)			
N1	135.51	4.162	135.51	4.162	0.000	0.000	N
N2	135.49	4.167	135.49	4.167	0.000	0.000	N
N3	136.53	4.162	136.53	4.162	0.000	0.000	N
N4	135.67	4.163	135.67	4.163	0.000	0.000	N
C1	133.57	4.159	133.57	4.159	0.000	0.000	N
C2	133.54	4.160	133.54	4.160	0.000	0.000	N
C3	133.45	4.163	133.45	4.163	0.000	0.000	N
C4	134.46	4.158	134.46	4.158	0.000	0.000	N

## 3. Vibration

No.	Pre-test		After test		Mass loss (%)	Voltage loss (%)	Whether leakage, venting, disassembly, rupture, fire (Y/N)
	Mass (g)	Voltage (V)	Mass (g)	Voltage (V)			
N1	135.51	4.162	135.51	4.148	0.000	0.336	N
N2	135.67	4.167	135.67	4.153	0.000	0.336	N
N3	136.53	4.162	136.53	4.148	0.000	0.336	N
N4	133.54	4.163	133.54	4.149	0.000	0.336	N
C1	133.45	4.159	133.45	4.145	0.000	0.337	N
C2	134.46	4.160	134.46	4.146	0.000	0.337	N
C3	133.45	4.163	133.45	4.149	0.000	0.336	N
C4	134.46	4.158	134.46	4.145	0.000	0.313	N



扫描二维码  
关注谱尼测试



Pony Testing International Group

#### 4. Shock

No.	Pre-test		After test		Mass loss (%)	Voltage loss (%)	Whether leakage, venting, disassembly, rupture, fire (Y/N)
	Mass (g)	Voltage (V)	Mass (g)	Voltage (V)			
N1	135.51	4.148	135.51	4.147	0.000	0.024	N
N2	135.67	4.153	135.67	4.152	0.000	0.024	N
N3	136.53	4.148	136.53	4.147	0.000	0.024	N
N4	133.54	4.149	133.54	4.149	0.000	0.000	N
C1	133.45	4.145	133.45	4.145	0.000	0.000	N
C2	134.46	4.146	134.46	4.145	0.000	0.024	N
C3	133.45	4.149	133.45	4.148	0.000	0.024	N
C4	134.46	4.145	134.46	4.145	0.000	0.000	N

#### 5. External short circuit

No.	Peak temperature (°C)	Whether disassembly, rupture, fire (Y/N)
N1	55.9	N
N2	53.2	N
N3	57.4	N
N4	56.8	N
C1	53.4	N
C2	54.4	N
C3	54.2	N
C4	59.3	N

#### 6. Crush

No.	Peak temperature (°C)	Whether disassembly, fire (Y/N)
N5	25.6	N
N6	25.8	N
N7	26.7	N
N8	26.9	N
N9	25.8	N





扫二维码  
关注谱尼测试



Pony Testing International Group

### 7. Overcharge

No.	Whether disassembly, fire (Y/N)
N10	N
N11	N
N12	N
N13	N
C5	N
C6	N
C7	N
C8	N

### 8. Forced discharge

No.	Whether disassembly, fire (Y/N)
N14	N
N15	N
N16	N
N17	N
N18	N
N19	N
N20	N
N21	N
N22	N
N23	N
C9	N
C10	N
C11	N
C12	N
C13	N
C14	N
C15	N
C16	N
C17	N
C18	N

\*\*\* End of report \*\*\*

**PONY 谱尼测试**  
Pony Testing International Group  
Hotline 400-819-5688  
[www.ponytest.com](http://www.ponytest.com)

Pony Testing International Group Shanghai Co., Ltd.  
Company Address: No.6/7 Building, No.99, Wen Xiangdong Road, Songjiang District, Shanghai, China

BeijingLab: (010)82618116

ShanghaiLab: (021)64851999

QingdaoLab: (0532)88706866

ShenzhenLab: (0755)26050909

TianjinLab: (022)27360730

SuzhouLab: (0512)62997900

ChangchunLab: (0431)85150908

DalianLab: (0411)87336618

HaerbinLab: (0451)88104561

ZhengzhouLab: (0371)69350670

XinjiangLab: (0991)6684186

ShijiazhuangLab: (0311)85376660

XianLab: (029)89608785

HuhehaoteLab: (0471)3450025

HangzhouLab: (0571)87219096

NingboLab: (0574)87736499

WuhanLab: (027)83997127

HefeiLab: (0551)63843474

GuangzhouLab: (020)89224310

XianmenLab: (0592)5568048

ChengduLab: (028)87702708