



Advanced Environmental Instrumentation



✓ Surveyed

✓ Documented

✓ Reported

Features:

- View / Log 6 Particle Sizes Simultaneously
- 0.3 to 0.5 μ m, 0.5 to 1.0 μ m, 1.0 to 2.5 μ m, 2.5 to 5.0 μ m, 5.0 to 10.0 μ m, 25+ μ m
- View / Log as differential or cumulative
- Alternatively display μ g/m³ in Concentration Mode including approximate PM2.5, PM10, TSP
- 0.1 CFM (2.8 LPM) Flow Rate
- Bright Color Touch Screen Interface
- Removable / Rechargeable Li-Ion Battery
- Optional Temperature / Relative Humidity Probe
- Internal Audible Alarm
- Belt clip for walk-thru surveys or attachment to tripod or to GrayWolf Cases/Area Monitors
- On-board Memory (stores 3,000 samples)
- Supplied with GrayWolf's WolfSense® PC Software for data download and analysis
- Optional WolfSense ARG Automated Report Generation Software
- Use as a stand-alone or interface to GrayWolf's DirectSense®, WolfPack® and AdvancedSense® for Enhanced Logging and Expanded Features
- Proven reliability since 2007
- 2-Year Warranty

Benefits:

- Easy to Use (User-Friendly Interface)
- Expands your GrayWolf AdvancedSense, DirectSense and WolfPack parameters
- Efficiently Combines Particle Counting and Mass Concentration read-out in one Meter



Use the PC-3016A as a stand-alone particle meter, plug it into a mobile computer or into a sophisticated AdvancedSense/WolfPack system for simultaneous connection with GrayWolf's DirectSense probes.

- Ergonomically designed and lightweight, the PC-3016A is tried-and-true, offered by GrayWolf (and improved upon) since 2007.
- Easily download data from the PC-3016A using the included WolfSense PC Software to create high quality trend/bar graphs/tables, use WolfSense's advanced organizational features or simply export to Microsoft Excel®.
- Optionally add Advanced Report Generator software for extremely efficient, automated reporting of particle count/concentration data.
- Offering 6 channels of simultaneous particle counting, the PC-3016A displays both cumulative and differential particle count data on its easy-to-read 3.5" (8.9 cm) color touch screen.
- Display/Log readings in particle counts and/or calculated mass concentration (μ g/m³), including PM1.0, PM2.5, PM10, TSP and more.
- Monitor particulate levels, even in those "hard-to-reach" areas where two-handed operation is unsafe.



PC-3016A

6-Channel Particle Counter



GRAYWOLF®
SENSING SOLUTIONS
Ph. 1-203-402-0477
Fax: 1-203-402-0478

Email:
Salesteam@GrayWolfSensing.com

Website:
www.GrayWolfSensing.com



PC-3016A

6-channel Particle Counter

Specifications: PC-3016A

Size Range: 0.3 - 25.0 $\mu\text{m}+$ (145 μm max into inlet)

Channel Sizes: 0.3, 0.5, 1.0, 2.5, 5.0, 10.0 μm

Optional: inquire about other size cuts (Particle Count only)

Flow Rate: 0.1 CFM (2.83 LPM)

Counting Efficiency: 50% @ 0.3 μm ; 100% for Particles >0.45 μm (per ISO 21501-4)

Laser Source: Extreme Life Laser Diode with >20 Years MTTF

Zero Count Level: <1 Count / 5 minutes (per ISO 21501-4)

Concentration Limits: 8,000,000 Particles / ft^3 @ 10% Coincidence Loss

Calibration: Meets ISO 21501-4 Calibration using NIST Traceable PSL Spheres, DMA and Condensation Particle Counter

Count Modes: Automatic, Manual, Beep, Concentration, Cumulative/Differential, Mass Concentration

Data Storage (on-board): 3,000 Sample Records, Rotating Buffer (includes particle and environmental data, plus alphanumeric location and time)

Communication Modes: RS232 converted to USB (via included RJ-45 to USB cable) for PCs or Printers. RS232 to AdvancedSense, WolfPack or tablet/PC w/GWSS cable/software.

Touch Screen Display: 3.5" (8.89cm, Color TFT)

Alarms: Internal Alarm Buzzer. Alarms on Counts, Low Battery, Sensor Failure

Sample Inlet: Isokinetic Sampling Probe

Sample Output: Internally Filtered to HEPA Standards (>99.97% @ 0.3 μm)

Vacuum Source: Internal Pump, Automatic Flow Control

Enclosure: High Impact Injection Molded Plastic (with handle)

Power: External 100-240V, 50-60Hz Power Supply (12VDC, 1.25A)

Battery: Li-Ion, Removable & Rechargeable

Dimensions: 8.75" x 5.0" x 2.5" (22.23 x 12.7 x 6.35 cm)

Weight: 2.2lb (1kg)

Languages: English (U.S.), Deutsch, Espanol, Italiano, Français, Russian, Japanese, Korean and Chinese.

Warranty: 2 years on instrument, 1 year on accessories

Environmental Conditions:

Operating: 50°F to 104°F (10°C to 40°C) / 20% RH to 95% RH non-condensing

Storage: 14°F to 122°F (-10°C to 50°C) / Up to 98% RH non-condensing

Accessories Included:

Operating manual on thumb drive, Removable battery, Isokinetic Sample Probe (direct mount), Purge (zeroing) Filter, 100/240V AC charger/adaptor, Belt Clip, GrayWolf's WolfSense PC Data Download and Reporting Software.

Options:

PC-GW6AAS-KIT also includes PCC-GW6 hardshell carrying case, interface cable for interface to AdvancedSense (specify **PC-GW6AWP-KIT** for WolfPack).

PC-GW6ADSL-KIT also includes PCC-GW6 hardshell carrying case, mobile PC interface cable, and WolfSense LAP Software for interface to Tablet/Laptop/Desktop PCs

PC-GW6-RHCF Temperature/Relative Humidity Probe

32-122°F (0-50°C), +/- 1°F (0.5°C), 15-90% +/- 5% RH

WolfSense ARG Advanced, Automated Reporting Software

PCC-GW6 Hardshell case. Dimensions: 38.1cm x 33.0cm x 17.8cm (15" x 13" x 7")

PCC-36P Hard-shell Security case with foam cutouts for AdvancedSense meter, sensor exposure for DSII probe plus space & inlet exposure for internal PC-3016

AD-L71M-PC3016 Cable for interfacing PC-3016A to AdvancedSense Meter

AD-L6P-PC3016 Cable for for interfacing PC-3016A to WolfPack (includes power socket for powering PC-3016A from the WolfPack)

WS-LAP WolfSense application for WIN 7/8/10 PC interface

✓ Measure Smart

✓ Report Efficiently



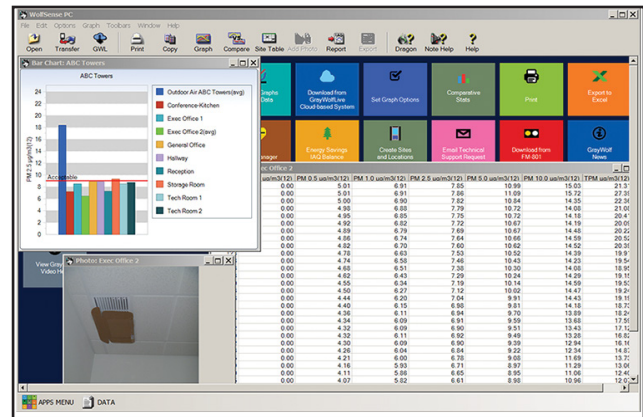
Optional
PC-GW6-RHCF
%RH, °F/°C probe
(removable)



PCC-GW6
Hard-Shell
Case

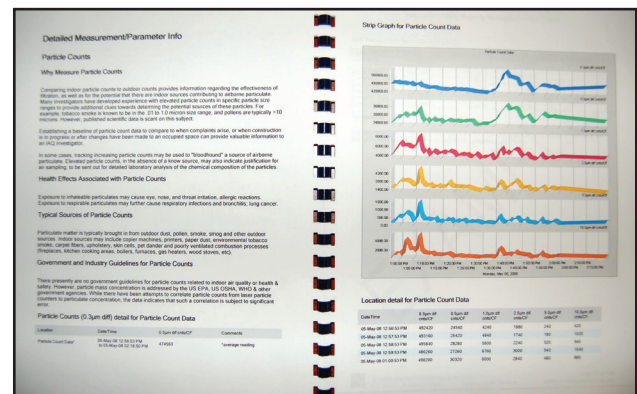


Example ▲
AdvancedSense Screen
(interface enables
GrayWolf's powerful in-situ features
for particulate data, optional
remote WiFi access and more)



Example
WolfSense
PC Screen
data
transfer
& analysis
software
(supplied as
standard)

Example
WolfSense
ARG report
(optional
automated
report
generation
software)



GrayWolf Sensing Solutions reserves the right to change specifications without notice.



**GRAYWOLF
SENSING SOLUTIONS**
6 Research Drive (Worldwide Headquarters)
Shelton, CT 06484 USA
Ph. (1)203-402-0477
800-218-7997



Email: Salesteam@GrayWolfSensing.com
www.GrayWolfSensing.com

**GRAYWOLF
SENSING SOLUTIONS**
Annacotty Industrial Park, Unit 1C
Annacotty, County Limerick
V94 PR2Y Ireland
Ph. (353) 61358044