



March 2018

Rental Program

Rental Program

Rent from the Manufacturer

with up-to-date **Factory Calibrations** and significant **Rebates** toward equipment purchase

1-203-402-0477

ADVANCED SENSE® HVAC

ΔP , %RH,
Airspeed+ Meter

ADVANCED SENSE® FM

Air Velocity,
Fumehood Meter

AdvancedSense HVAC Monitoring Kits

Weekly Rental Rate: **\$295**

Monthly Rental Rate: **\$825**

INCLUDES:

AdvancedSense BE datalogging meter

DP-702LH-A auto-zeroing, auto-ranging differential pressure sensor (installed) w/2m dual tubing

AS-201 telescoping hotwire anemometer probe (measures airspeed, °C/°F, volume airflow)

RH-AS2 %RH, temperature direct connect probe (also dewpoint, wetbulb temperature, specific humidity, absolute humidity, and humidity ratio), and **ACC-RH-HDLA** handle

WolfSense PC data download, graphing and analysis software

WolfSense Application software, includes basic volume flow (cfm, l/s) calculation as the FM kit, below

WolfSense ARG Advanced Report Generator makes comprehensive IAQ, HVAC and other environmental report generation easy and efficient

PCC-AS01 pouch with belt loop, hand strap and neck strap

PCC-22AS hard-shell carrying case (with extra room for small pitot tube and 2 x K thermocouple probes)



AdvancedSense BE
datalogger

AdvancedSense FM Fumehood/Airspeed Measurement Kits

Weekly Rental Rate: **\$275**

Monthly Rental Rate: **\$795**

INCLUDES:

AS-201 telescoping hotwire anemometer probe

AdvancedSense BE datalogger (with differential pressure sensors installed and 2m dual tubing)

WolfSense Application software, includes basic volume flow (cfm, l/s) calculation

WolfSense PC data download, graphing and analysis software

WolfSense ARG Advanced Report Generator software

HoodCal software for fumehood face velocity measurement

PCC-AS01 case with belt loop and detachable neck strap

ACC-TPD-AS tripod/extension mount fitting

ACC-TAPEM1 tape measure

PCC-22AS hard-shell case



RH-AS2 TRH probe
on **ACC-RH-HDLA**
handle



PIT-504 pitot tube kit

OPTIONS

WEEKLY MONTHLY

Substitute **AS-202A** articulating and telescoping airspeed probe \$15.....\$45
for AS-201 (additional amount)

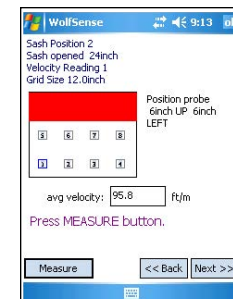
PC-GW6A-KIT 6-channel particle counter displays counts and $\mu\text{g}/\text{m}^3$ \$425.....\$1125
for 6 size ranges (including PM2.5, PM10), w/AS interface cable, hardshell case

Substitute **AdvancedSense Pro** (with particle meter interface, \$25.....\$75
camera, K thermocouple sockets (as standard), etc.) for **AdvancedSense BE**

PIT-504-KIT extendable pitot tube kit w/2 spare PIT-504-EXT extensions \$50.....\$150

HoodCal Software for fumehood face velocity measurement..... \$25.....\$70

DuctCal Software for duct traverse volume airflow calculations \$20.....\$50



HoodCal fumehood
face velocity software

GRAYWOLF SENSING SOLUTIONS

Advanced Environmental Instrumentation

6 Research Dr., Shelton, CT 06484 USA • Tel: 1-203-402-0477 • Fax: 1-203-402-0478 • e-mail: Salesteam@GrayWolfSensing.com

www.GrayWolfSensing.com



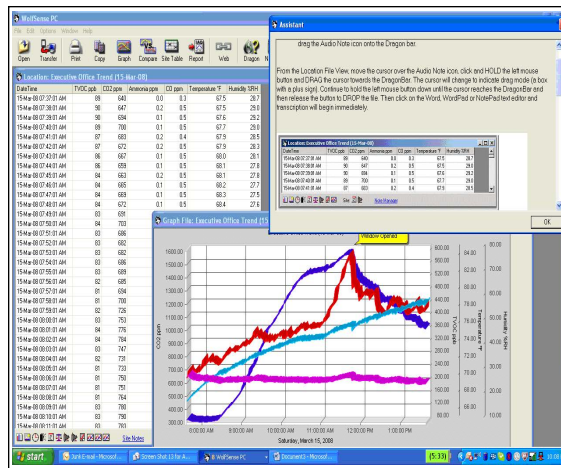
**AS-201 telescoping
hotwire anemometer**



**AS-202A articulating/
telescoping thermal
anemometer**



**PC-3016A
particle counter**



WolfSense PC data transfer software



WolfSense ARG report

WolfSense PC software allows logged data to be down-loaded to your PC for review, graph generation, cut & paste reporting and/or simple export to Excel

WolfSense ARG Advanced Report Generator includes basic and detailed HVAC, IAQ, plus LEED and WELL building report templates. A Template Design Wizard walks the user through report set-up:

- Define how to display measured data.
- Select from a list of government and industry guidelines to include for each parameter.
- Choose from and edit canned text blocks with general IAQ background info.
- Automatically insert notes taken in the field on the AdvancedSense; text, drawings, photos.
- Create and insert graphs with comments, alarm/guideline lines.
- Add equipment descriptions/specs/photos, probe calibration info, company information/logos and much more.

REBATE UPON PURCHASE

Want to buy the equipment that you've rented? Purchase the kit that's been shipped to you and apply 75% of the rental price that you paid (up to a maximum of 75% of the total purchase price) toward the purchase price. In some cases, dependent on the condition of the equipment shipped to you, a "demo/rental equipment discount" may also be available.

Want to send the kit back and order a brand new unit? Order within 12 months from the date that you return your rental kit and apply 25% of the rental price...(up to a maximum of 25% of the total purchase price) toward your purchase. Order within 6 months from the date that you return your rental kit and apply 35% of the rental price...(up to a maximum of 35% of the total purchase price) toward your purchase. And if you order within 45 days from the date that you return your rental kit, apply 50% of the rental price...(up to a maximum of 50% of the total purchase price) toward your purchase.

Security Deposit: Rentals may require a (refundable) security deposit (covering the value of the rental equipment), if credit terms have not been previously established and maintained with GrayWolf. Allow 10 business days from the time that you supply adequate credit references for a new open account to be set up.

GrayWolf Sensing Solutions cannot guarantee the availability of rental equipment. The quoted rental pricing is exclusively available to clients in the USA and Canada, and is subject to change. Contact your local distributor for rental pricing and availability in other countries.

GRAYWOLF SENSING SOLUTIONS

Advanced Environmental Instrumentation

6 Research Dr., Shelton, CT 06484 USA • Tel: 1-203-402-0477 • Fax: 1-203-402-0478 • e-mail: Salesteam@GrayWolfSensing.com

www.GrayWolfSensing.com