

# Rental Program

Rent from the Manufacturer

with up-to-date **Factory Calibrations** and significant **Rebates** toward equipment purchase

**1-203-402-0477**

## AdvancedSense TOX Multi-Gas Monitoring Kits

Weekly Rental Rate: **\$325**

Monthly Rental Rate: **\$825**

### INCLUDES:

**TG-501** Probe, with Temperature sensor\*

(Does NOT include price of specific gas sensors. Choose from below).

**AdvancedSense Pro** datalogger (w/ differential & barometric pressure sensors installed)

**WolfSense PC** data download, graphing and analysis software

**WolfSense ARG** Advanced Report Generator software

**PCC-AS01** instrument pouch with belt clip and detachable neck strap

**PCC-05IQ** probe pouch with shoulder strap for hands-free, walk-through surveys

**PCC-10** Hard-shell Security case for in-situ monitoring



**AdvancedSense Pro  
with TG-501 probe**

### SENSORS

### WEEKLY MONTHLY

**NO<sub>2</sub>, SO<sub>2</sub>, NO, NH<sub>3</sub>, O<sub>2</sub>, H<sub>2</sub>S, CO, or O<sub>3</sub>** (each)..... \$145.....\$200

\*Up to 5 additional electrochemical gas sensors may be installed into the TG-501 probe.

Additional electrochemical sensors (e.g. Cl<sub>2</sub>, HCl, HCN) are available for purchase to be installed in your rental.

### OPTIONS

**IQ-410** Probe with CO<sub>2</sub>, CO, %RH and temperature sensors ..... \$265.....\$725

**IQ-610** Probe with ppb VOC, CO<sub>2</sub>, CO, %RH, °C/°F plus ..... \$325.....\$995

1 specific gas sensor slot

**TG-502H** Probe with ppm VOC, %RH, °C/°F plus 3 EC gas sensor slots\* ..... \$295.....\$795

**AS-201** Telescoping Hotwire Air Velocity probe ..... \$100.....\$275

**FM-801-KIT** Formaldehyde meter, AdvancedSense interface cable,..... \$150.....\$375

case; HCHO sensor cartridges not included (must be

purchased; \$165 single cartridge, \$475 5-pack, \$775 10-pack)

**PC-GW6A-KIT** 6-channel Particle Counter displays counts and µg/m<sup>3</sup> ..... \$425.....\$1125

for 6 size ranges (including PM2.5, PM10), w/AS interface cable, hardshell case

**ACC-TPD1-Kit** Tripod kit for mounting AdvancedSense or tablet, DirectSense..\$55 .....\$100

probe and FM-801 (or 2nd DS probe) and PC-3016 (does not include the instrumentation)

**AD-L7F1M-USBSF** USB key download cable (AdvancedSense Pro)..... \$10.....\$25

**PCC-15** dual probe case upgrade (replaces PCC-10) ..... \$50.....\$125

**CA-HD2\*\*** Gas calibration hood ..... \$10.....\$25

**ACC-REG1** Regulator & 2 cylinder hard-shell case..... \$15.....\$45

\*\* (No gases included; reference gas cylinders are available for sale, not rental)



**AdvancedSense Pro  
display in live mode  
(select ppb, ppm,  
µg/m<sup>3</sup>, or other units)**



**AdvancedSense Pro  
with display in graph  
mode**



**PC-3016A Particle  
Count meter**



**FM-801  
Formaldehyde meter**



**Optional PCC-15 dual probe case  
(shown with FM-801 and PM-205)**

## GRAYWOLF SENSING SOLUTIONS

Advanced Environmental Instrumentation

6 Research Dr., Shelton, CT 06484 USA • Tel: 1-203-402-0477 • Fax: 1-203-402-0478 • e-mail: Salesteam@GrayWolfSensing.com

[www.GrayWolfSensing.com](http://www.GrayWolfSensing.com)

Rental Program

March 2018



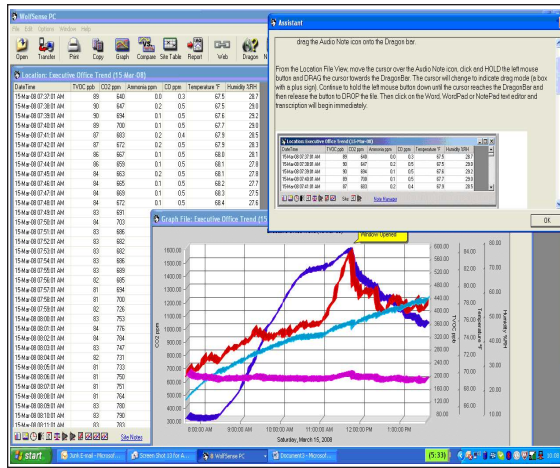
Rental includes  
instrument pouch and  
probe pouch(es)  
for hands-free  
walk-thru surveys



PCC-10 hardshell  
case is also included  
for transport and for  
secure trend logging



ACC-TPD1  
Tripod



WolfSense PC data transfer software



WolfSense ARG report

**WolfSense PC** software allows logged data to be down-loaded to your PC for review, graph generation, cut & paste reporting and/or simple export to Excel

### WolfSense ARG Advanced Report Generator

A Template Design Wizard walks the user through report set-up:

- Define how to display measured data (Toxic gases, %RH, Temperature, VOCs, etc).
- Select from a list of government and industry guidelines to include for each parameter.
- Choose from and edit canned text blocks with general IAQ background info.
- Automatically insert notes taken in the field on the AdvancedSense; text, drawings, photos.
- Create and insert graphs with comments, alarm/guideline lines.
- Add equipment descriptions/specs/photos, probe calibration info, company information/logos and much more.

## REBATE UPON PURCHASE

**Want to buy the equipment that you've rented?** Purchase the kit that's been shipped to you and apply 75% of the rental price that you paid (up to a maximum of 75% of the total purchase price) toward the purchase price. In some cases, dependent on the condition of the equipment shipped to you, a "demo/rental equipment discount" may also be available.

**Want to send the kit back and order a brand new unit?** Order within 12 months from the date that you return your rental kit and apply 25% of the rental price... (up to a maximum of 25% of the total purchase price) toward your purchase. Order within 6 months from the date that you return your rental kit and apply 35% of the rental price... (up to a maximum of 35% of the total purchase price) toward your purchase. And if you order within 45 days from the date that you return your rental kit, apply 50% of the rental price... (up to a maximum of 50% of the total purchase price) toward your purchase.

**Security Deposit:** Rentals may require a (refundable) security deposit (covering the value of the rental equipment), if credit terms have not been previously established and maintained with GrayWolf. Allow 10 business days from the time that you supply adequate credit references for a new open account to be set up.

*GrayWolf Sensing Solutions cannot guarantee the availability of rental equipment. The quoted rental pricing is exclusively available to clients in the USA and Canada, and is subject to change. Contact your local distributor for rental pricing and availability in other countries.*

**GRAYWOLF SENSING SOLUTIONS**  
Advanced Environmental Instrumentation

6 Research Dr., Shelton, CT 06484 USA • Tel: 1-203-402-0477 • Fax: 1-203-402-0478 • e-mail: [Salesteam@GrayWolfSensing.com](mailto:Salesteam@GrayWolfSensing.com)

[www.GrayWolfSensing.com](http://www.GrayWolfSensing.com)