

Rental Program

Rent from the Manufacturer

with up-to-date **Factory Calibrations** and significant **Rebates** toward equipment purchase

1-203-402-0477

**ADVANCED
SENSE™ TVOC**
Multi-Gas, PID Instrument

AdvancedSense TVOC Multi-Gas PID Monitoring Kits

Weekly Rental Rate: **\$425**

Monthly Rental Rate: **\$1125**

INCLUDES:

TG-502L* Probe, with ppb range PID sensor installed, for VOC, Temperature and %RH measurement (note: for higher range VOC measurements, specify the TG-502H* with ppm range PID installed)

AdvancedSense Pro datalogger (w/ differential and barometric pressure sensors installed)

WolfSense PC data download, graphing and analysis software

WolfSense ARG Advanced Report Generator software

PCC-AS01 instrument pouch with belt clip and detachable neck strap

PCC-05IQ probe pouch with shoulder strap for hands-free, walk-through surveys

PCC-10 Hard-shell Security Case for in-situ monitoring

SENSORS

WEEKLY MONTHLY

NO₂, SO₂, NO, NH₃, O₂, H₂S, CO, or O₃ (each)..... \$145.....\$200

*Up to 3 additional electrochemical gas sensors may be installed into the TG-502 probe.

Additional electrochemical sensors (e.g. Cl₂, HCl, HCN) are available for purchase to be installed in your rental.

OPTIONS

IQ-410 Probe with CO₂, CO, %RH and temperature sensors \$265.....\$725

IQ-610 Probe with ppb VOC, CO₂, CO, %RH, °C/°F plus 1 gas slot \$325.....\$995

TG-501 Gas Sensor Probe (not including gas sensors; \$200.....\$475
up to 5 may be installed)

AS-201 Telescoping Hotwire Air Velocity probe \$100.....\$275

FM-801-KIT Formaldehyde meter, AdvancedSense interface cable, \$150.....\$375
case; HCHO sensor cartridges not included (must be
purchased; \$165 single cartridge, \$475 5-pack, \$775 10-pack)

PC-GW6A-KIT 6-channel Particle Counter displays counts and µg/m³ \$425.....\$1125
for 6 size ranges (including PM2.5, PM10), w/AS interface cable, hardshell case

ACC-TPD1-Kit Tripod kit for mounting AdvancedSense or tablet, \$55.....\$100
DirectSense probe and FM-801 (or 2nd DS probe) and PC-3016
(does not include the instrumentation)

AD-L7F1M-USBSF USB key download cable (AdvancedSense Pro) \$10.....\$25

PCC-15 dual probe case upgrade (replaces PCC-10) \$50.....\$125

CA-HD2** Gas calibration hood \$10.....\$25

ACC-REG1 Regulator & 2 cylinder hard-shell case \$15.....\$45

** (No gases included; reference gas cylinders are available for sale, not rental)



FM-801
Formaldehyde meter



CA-GS25L/H gas cal kit



PCC-10 hardshell case is
included with rental for transport
and for secure trend logging



AdvancedSense Pro
with TG-502 probe



AdvancedSense Pro
display in live mode
(select ppb, ppm, µg/
m³, or other units)



AdvancedSense Pro
with display in graph
mode

GRAYWOLF SENSING SOLUTIONS

Advanced Environmental Instrumentation

6 Research Dr., Shelton, CT 06484 USA • Tel: 1-203-402-0477 • Fax: 1-203-402-0478 • e-mail: Salesteam@GrayWolfSensing.com

www.GrayWolfSensing.com



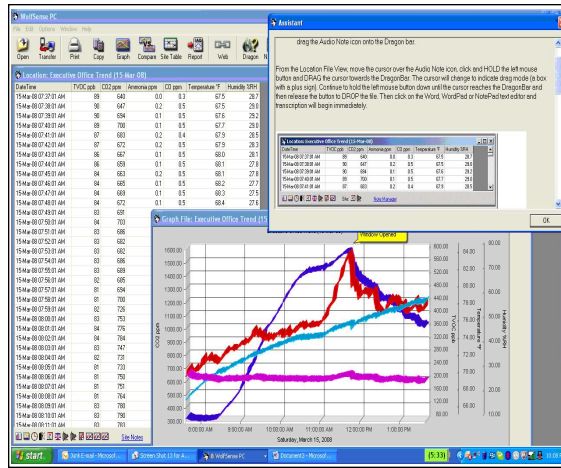
Rental includes
instrument pouch and
probe pouch(es)
for hands-free
walk-thru surveys



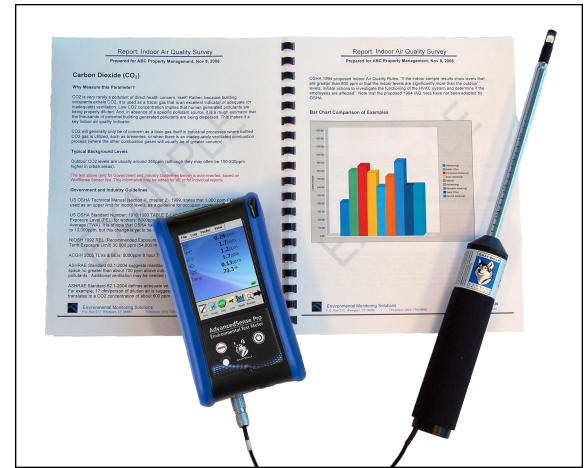
Optional PCC-15 dual
probe case (shown with
FM-801 and PC-3016)



ACC-TPD1
Tripod



WolfSense PC data transfer software



WolfSense ARG report

WolfSense PC software allows logged data to be down-loaded to your PC for review, graph generation, cut & paste reporting and/or simple export to Excel

WolfSense ARG Advanced Report Generator includes basic and detailed IAQ, plus LEED and WELL building report templates. A Template Design Wizard walks the user through report set-up:

- Define how to display measured data (Toxic gases, %RH, Temperature, VOCs, etc).
- Select from a list of government and industry guidelines to include for each parameter.
- Choose from and edit canned text blocks with general IAQ background info.
- Automatically insert notes taken in the field on the AdvancedSense; text, drawings, photos.
- Create and insert graphs with comments, alarm/guideline lines.
- Add equipment descriptions/specs/photos, probe calibration info, company information/logos and much more.

REBATE UPON PURCHASE

Want to buy the equipment that you've rented? Purchase the kit that's been shipped to you and apply 75% of the rental price that you paid (up to a maximum of 75% of the total purchase price) toward the purchase price. In some cases, dependent on the condition of the equipment shipped to you, a "demo/rental equipment discount" may also be available.

Want to send the kit back and order a brand new unit? Order within 12 months from the date that you return your rental kit and apply 25% of the rental price...(up to a maximum of 25% of the total purchase price) toward your purchase. Order within 6 months from the date that you return your rental kit and apply 35% of the rental price...(up to a maximum of 35% of the total purchase price) toward your purchase. And if you order within 45 days from the date that you return your rental kit, apply 50% of the rental price...(up to a maximum of 50% of the total purchase price) toward your purchase.

Security Deposit: Rentals may require a (refundable) security deposit (covering the value of the rental equipment), if credit terms have not been previously established and maintained with GrayWolf. Allow 10 business days from the time that you supply adequate credit references for a new open account to be set up.

GrayWolf Sensing Solutions cannot guarantee the availability of rental equipment. The quoted rental pricing is exclusively available to clients in the USA and Canada, and is subject to change. Contact your local distributor for rental pricing and availability in other countries.

GRAYWOLF SENSING SOLUTIONS

Advanced Environmental Instrumentation

6 Research Dr., Shelton, CT 06484 USA • Tel: 1-203-402-0477 • Fax: 1-203-402-0478 • e-mail: Salesteam@GrayWolfSensing.com

www.GrayWolfSensing.com